



LED Neon
FLEX



Version 2.2

VIVID

Wave 320

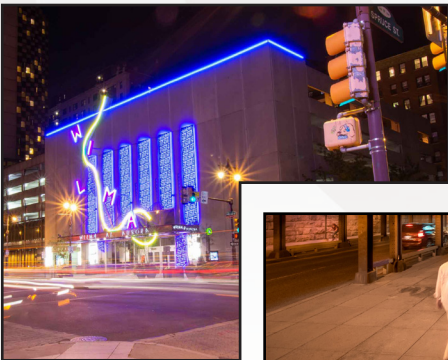
RGB

PVC 24V



For More Information

Toll Free: 1 (888) 580-6366



UNITED STATES

Pacific Business Center
1075 American Pacific Dr.,
Ste. A Henderson, NV 89074

CANADA

264 Botsford Street,
Suite 200 Moncton, NB
E1C 4X7

GILLS reserves the right to make any design changes for continuous improvement which will not affect the overall appearance or performance.

www.gills.com
www.ledneonflex.com

Light Dimension 0.63 x 0.67in (16x17mm)

Output	RGB	
LED Light	Epistar SMD LED Chip	Nichia SMD LED Chip
Max Run Length*		
Single Feed	Full Load: 22.97ft (7m)	Dynamic Load: 32.81ft (10m)
Double Feed	Full Load: 45.93ft (14m)	Dynamic Load: 65.62ft (20m)
Light Surface	Square profile 320°	
Lumen Maintenance	70,000 Hours L70 @ 25°C : 90,000 L50 @ 25°C 50,000 Hours L70 @ 50°C : 70,000 Hours L50 @ 50°C	

Electrical	
Input Voltage	24V DC
Power Consumption	3.66W/ft (12W/m)

Physical		
LED Count	25 LEDs/ft (84 LEDs/m)	22 LEDs/ft (72 LEDs/m)
LED Spacing	0.47in (11.9mm)	0.55in (13.89mm)
Cutting Unit Length	3.28in (83.3mm) (7 LEDs)	
Thermal Management	Free air convection	
Fixture Connections	End, side & Bottom lead wires	
Minimum Bend Diameter	11.81in (300mm) (Top Bending Only)	

Temperature Ranges	
Installation	32°F to 140°F (0°C to 60°C)
Operating	-13°F to 140°F (-25°C to 60°C)
Humidity	0-95% non condensing

Dependability	
Warranty	5 Year Warranty

Safety	
Certification	Tested to UL & CSA by Underwriters Laboratory for use in USA and Canada, complies with California Title 24 Requirements, Lighting Facts. Exceeds ANSI C78.377A, CE & RoHS Compliant.
IP Rating	IP68 with appropriately rated accessories

*Max Run Length: Unless otherwise stated, snap and seamless run lengths are the same.

Color Information

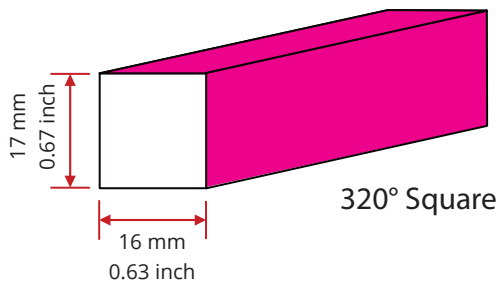
Color	CCT Wavelength
Red	620-630nm
Green	520-530nm
Blue	465-475nm
R+G+B (W)	N/A

Lumen Count

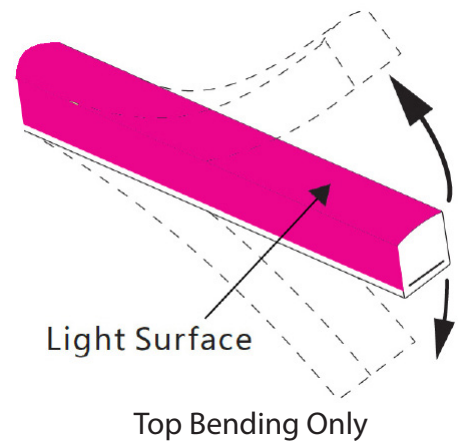
Color	Per Foot	Per Meter	Power
Red	>33.53lm	>110lm	/
Green	>79.25lm	>260lm	/
Blue	>9.14lm	>30lm	/
R+G+B (W)	>121.92lm	>400lm	3.66W/ft (12W/m)



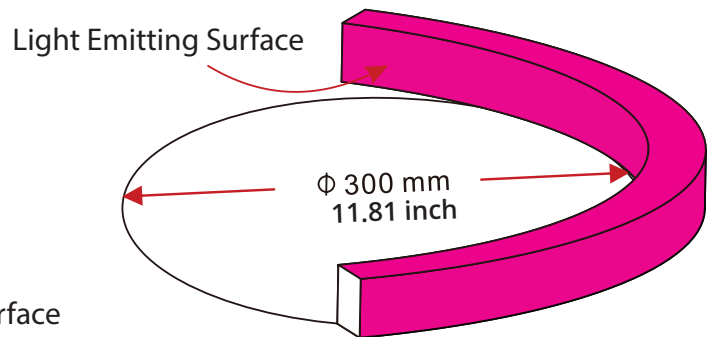
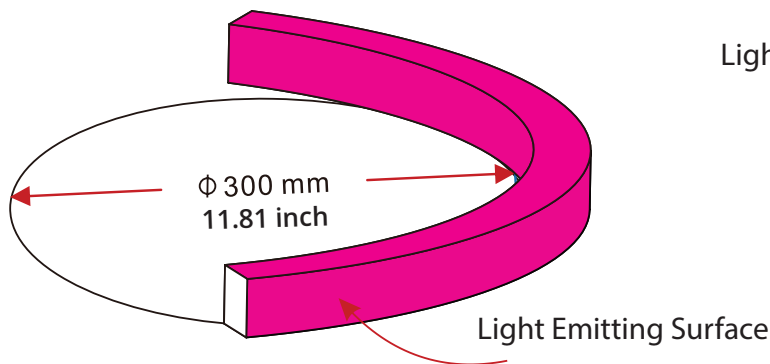
Light Profile



Bending Direction

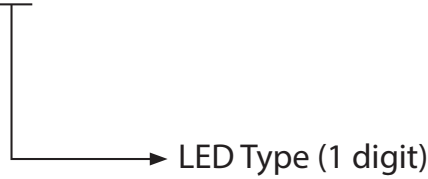


Minimum Bending Diameter



Fixtures

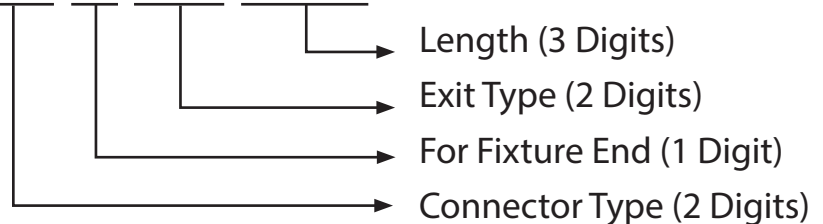
NF-16E-0-03-4W-X-RGB-24DV



LED Type (1 digit)
E - Epistar
N - Nichia

Lead Connector

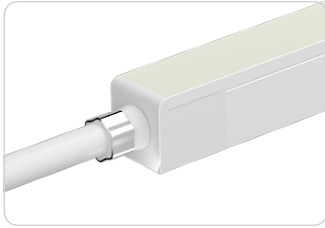
NA-16E-1-01-4W-XX-X-XX-XXX-S



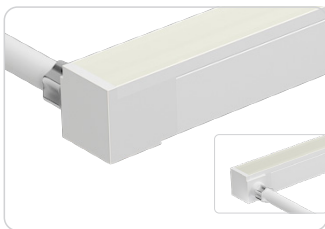
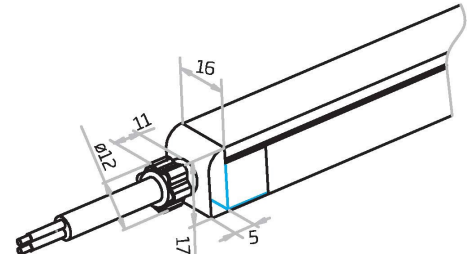
Connector Type (2 Digits)	For Fixture End (1 digit)	Exit Type (2 digits)	Length (3 digits)
SU - Submersible	1 - Input side	EN - End	0M3 - 0.98ft (30cm)
SE - Seamless	2 - Output side	BO - Bottom	01M - 3.28ft (1m)
	0 - Jumpers/T-Feeds/ Seamless (or Submersible) Bottom/Seamless (or Sub- mersible) End	SL - Side left	03M - 9.84ft (3m)
		SR - Side right	05M - 16ft (5m)
		EJ - End jumper	10M - 32.81ft (10m)
		BJ - Bottom jumper	000 - For End Cap
		TF - Power T feed	
		EC - End Cap	

For full part number naming rules, please refer to the document on www.glls.com/support/documentation/

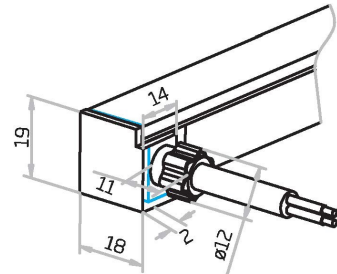
Seamless



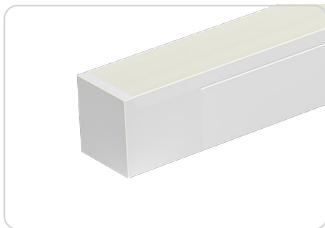
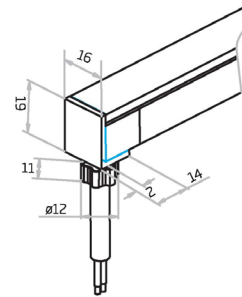
Seamless End Exit
NA-16E-0-00-4W-SE-0-EN-XXX-S



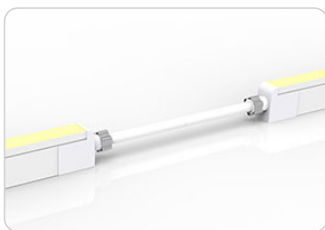
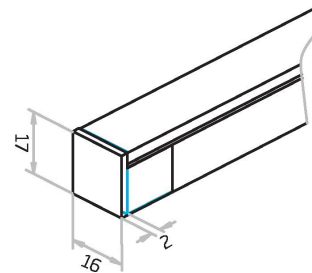
Seamless Side Exit
NA-16E-0-00-4W-SE-1-SL-XXX-S
NA-16E-0-00-4W-SE-1-SR-XXX-S
NA-16E-0-00-4W-SE-2-SL-XXX-S
NA-16E-0-00-4W-SE-2-SR-XXX-S



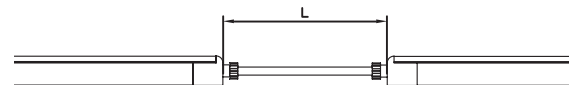
Seamless Bottom Exit
NA-16E-0-00-4W-SE-0-BO-XXX-S



Seamless End Cap
NA-16E-1-00-0W-SE-1-EC-000-P
NA-16E-1-00-0W-SE-2-EC-000-P

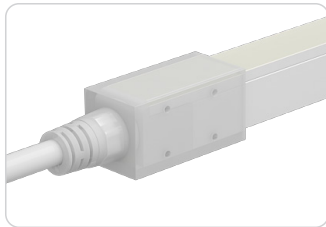


Seamless Jumper
NA-16E-0-00-4W-SE-0-EJ-XXX-S

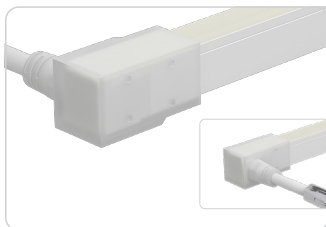
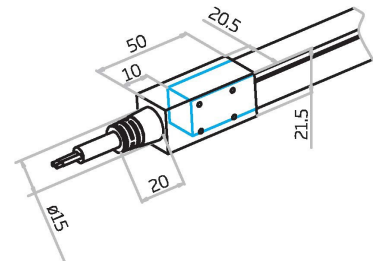


IP68: Submersible. Factory Assembly only.

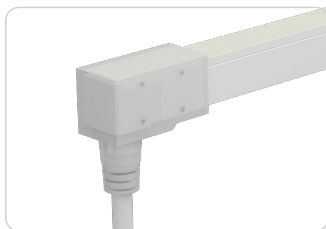
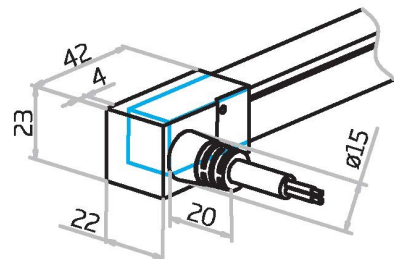
Submersible Seamless



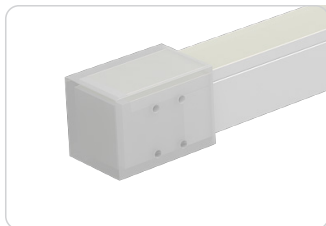
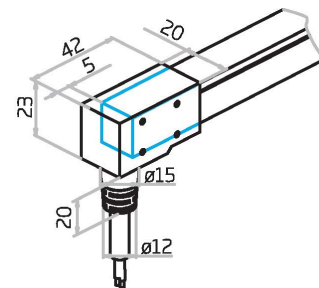
Submersible End Exit
NA-16E-0-00-4W-SU-0-EN-XXX-S



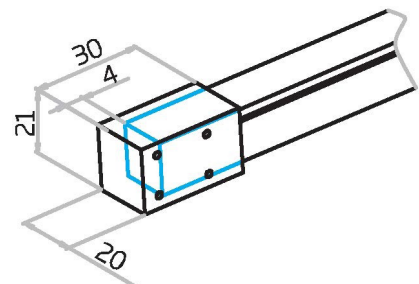
Submersible Side Exit
NA-16E-0-00-4W-SU-1-SL-XXX-S
NA-16E-0-00-4W-SU-2-SL-XXX-S
NA-16E-0-00-4W-SU-1-SR-XXX-S
NA-16E-0-00-4W-SU-2-SR-XXX-S



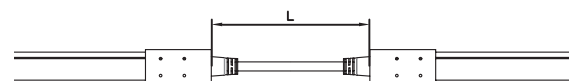
Submersible Bottom Exit
NA-16E-0-00-4W-SU-0-BO-XXX-S



Submersible End Cap
NA-16E-1-00-0W-SU-1-EC-000-P
NA-16E-1-00-0W-SU-2-EC-000-P



Submersible Jumper
NA-16E-0-00-4W-SU-0-EJ-XXX-S



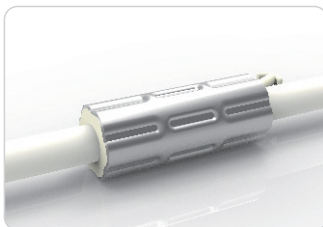
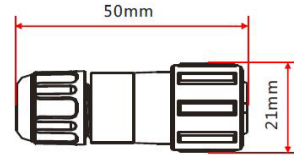
IP67: Rated for outdoor use.
Factory Assembly or DIY.

Barrel Connectors

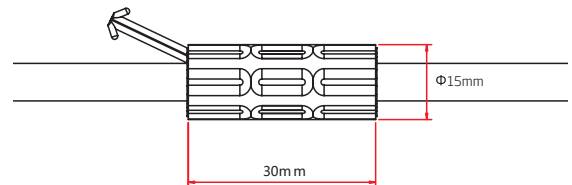


Barrel Connectors

- NA-XX-BC-DC-CXX-F
- NA-XX-BC-DC-CXX-M
- NA-XX-BN-XXA-CXX-F
- NA-XX-BN-XXA-CXX-M
- NA-XX-PL-XXA-CXX-F
- NA-XX-PL-XXA-CXX-M



Anti-Wicking Ferrule



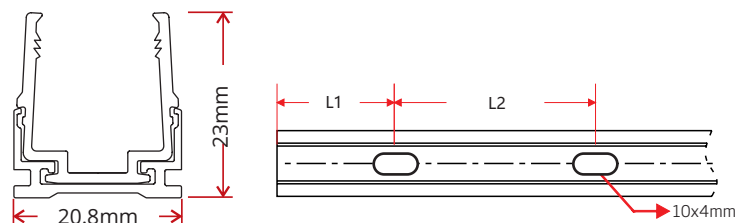
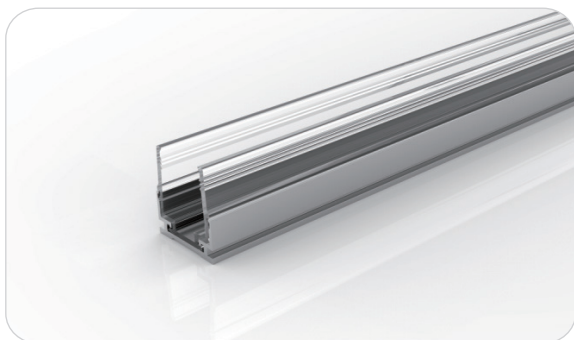
Anvil Cutter

Optional accessory for on-site cutting.

Factory order only

MOUNTING CHANNEL | PVC

Plastic & Aluminum Channel



W x H	Standard Length	Part Number	L1	L2	Screw Hole Φ	Hole #
0.82 x 0.91in (20.8x 23mm)	1.38in (35mm)	CL-16-R-AP-3C5-SD	0.69in (17.5mm)	/	0.39in x 0.16in (10 x 4mm)	1
	19.69in (500mm)	CH-16-R-AP-0M5-SD	1.97in (50mm)	7.87in (200mm)	0.39in x 0.16in (10 x 4mm)	3
	39.37in (1000mm)	CH-16-R-AP-01M-SD	3.94in (100mm)	7.87in (200mm)	0.39in x 0.16in (10 x 4mm)	5
	78.74in (2000mm)	CH-16-R-AP-02M-SD	3.94in (100mm)	7.87in (200mm)	0.39in x 0.16in (10 x 4mm)	10

Certifications

	Testing Organization	Certificate Serial N°	Report Reference
UL 2108	UL	20160726-E360029	E360029-2013
CE-EMC	SGS	SZEM1702001259LMV	SZEM160600421302

Fixture Testing

Optical Testing

Spectrum Analysis	IES LM 79 (Lumen, CCT, CRI, XY, SDCM, Wave 320length)
Photometric Distribution	IES LM 73 (Lumen intensity distribution & Lux diagram)
Lumen Maintenance & Lifetime	IES LM 84 & IES TM28

Temperature Testing

Normal Temperature Test	UL1598 & UL2388 & IEC60598-1 & IEC60598-2-21
Abnormal Operation Test	UL1598 & UL2388 & IEC60598-1 & IEC60598-2-21

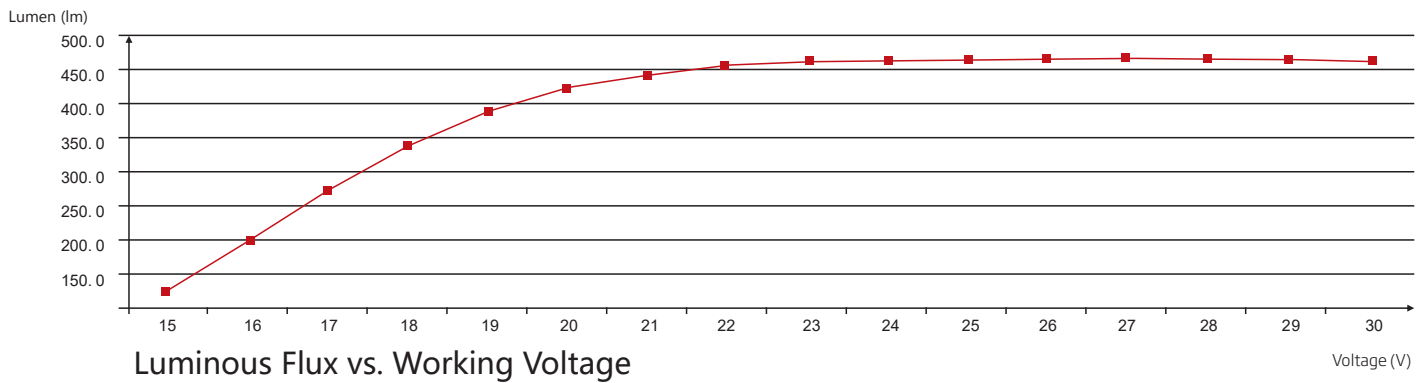
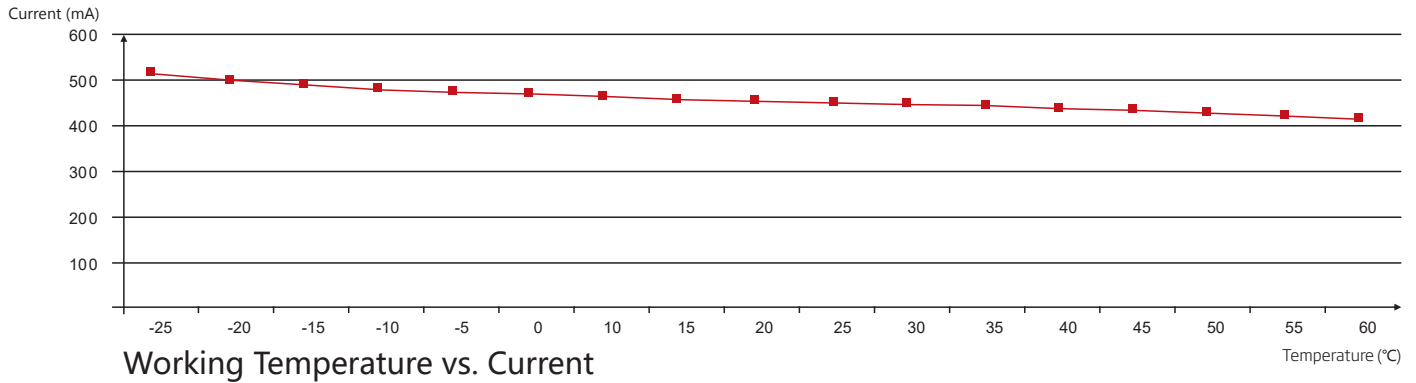
Durability Testing

Bending Test	Manufacturer-defined, 500 cycles
Swing Test	UL2388, >750 cycles
Tensile Test	Manufacturer-defined, > the weight of light in max. connection length double feed
Twist Test	Max connection length double feed Manufacturer-defined, >200 cycles
Ball Impact	UL1598 & UL2388 & IEC60598-1 & IEC60598-2-21
IK07 IK08	IEC62262

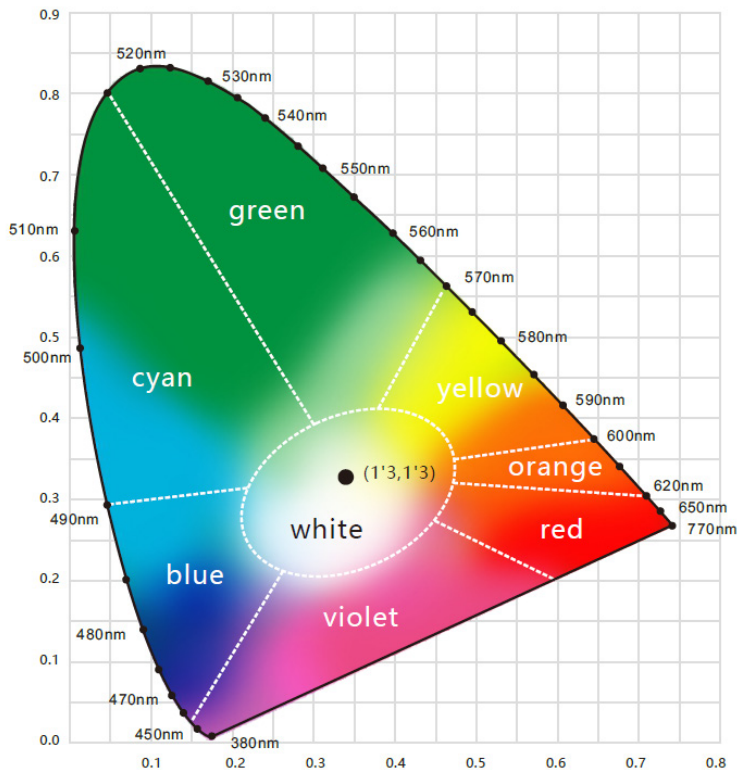
Environmental Testing

Chlorinated Water Immersion	BG9667, PH6.8-7.6, free chlorine 0.3-0.6mg/L
Salt Water Immersion	IEC60598-1, Salinity 4%
Salt Spray Test	IEC68-2-11
Outdoor Exposure	Manufacturer-defined
Flame Resistance	UL94
UV Exposure	ASTMG 154, ISO 4892-3, UVA @ 340nm
IPX5, IPX6, IPX7, IPX8	IEC60529
Temperature Shock	Manufacturer-defined, -40°C - 60°C (typical temperature range)
Constant Temperature	Manufacturer-defined

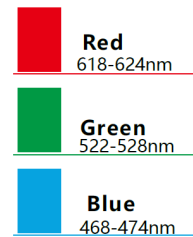
Charts



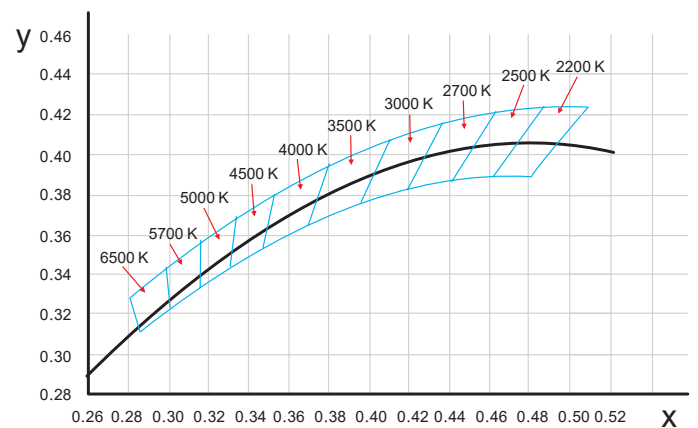
Wavelength of Color Light

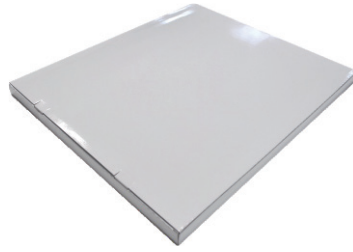
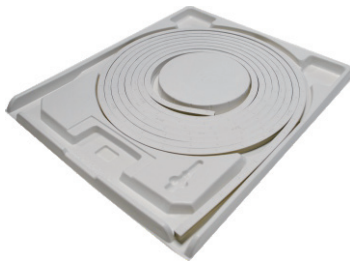


Light Color



(X,Y) Chromaticity Diagram





White Box

Packing Box

Fixture Length	White Box Dimensions	Packing Box Dimensions	# Of White Boxes	Package Weight
196.85in (5m)	15.35x2.05x19.67in (39x5.2x50cm)	20.47x15.34x11.02in (52x41x28cm)	5	30.86lbs (14kg)
393.7in (10m)	20.08x2.05x24.41in (51x5.2x62cm)	25.2x20.87x11.02in (64x53x28cm)	5	57.32lbs (26kg)
393.7in (10m)	20.08x2.05x24.41in (51x5.2x62cm)	25.2x20.87x6.9in (64x53x17.5cm)	3	35.27lbs (16kg)
787.4in (20m)	26.77x2.05x31.1in (68x5.2x79cm)	31.9x27.56x4.92in (81x70x12.5cm)	2	48.5lbs (22kg)